



Presenting
THE ALL NEW



CHERAN PLAZA

WWW.CHERANPLAZA.COM

CHERAN PLAZA



Cheran Plaza will be another outstanding office space developed by Cheran Group. It will offer excellent access to the entire city, while providing a refreshing, enjoyable working environment and efficient office space.

Comprising of 10 levels, with a total leasable surface of 100,000 sq.ft, the plaza is located on Trichy Road, just a few minutes away from bus and railway station.

The project is designed to provide everything that people need to work productively and yet live life to the full. The buildings have generous receptions creating an excellent first impression to visitors, and all floors enjoy excellent natural light and high flexibility for partitioning.

We understand that we don't just offer our customers spaces to inhabit. Rather, we help create pivotal moments that introduce them to a whole new way of life!

We are driven to offer them experiences that they can enjoy and grow accustomed to, as the norm, for the rest of their lives.

DESTINATION



Trichy Road makes a strong case for businesses to set office in thanks to a number of large residential hubs. Chera Plaza finds itself in the middle of one such premium hub, right on arterial road, yet away from the traffic and pollution that come with it.

HIGHLIGHTS



HEART OF COIMBATORE

Located in one of the fastest growing locality



GREAT FRONTAGE

Cheran Plaza features a stunning facade, impressive lobbies and an excellent address



RIGHT LOCALITY RIGHT AUDIENCE

In the midst of the most premium residential neighbourhoods, plaza gets the right eyeballs



LIGHT VENTILATION AND VIEWS

Ample window space and greenery outside allow for abundant natural light and good views



PEACEFUL, UPSCALE

Located near residential hubs with less traffic & pollution



ABUNDANT PARKING

Multi-level parking upto 60 cars.



EASY ACCESS FROM THE STREET

Easy access to entry and exit points, wheel-chair accessible entrances & floors



EFFICIENT FLOOR PLANS

Whether you want an open plan office, have a meeting room, or plan for more desks, Cheran Plaza offers that flexibility for your business



WALKING DISTANCE

from Race Course



JUST 1.5 KMS AWAY FROM

Coimbatore Railway Station



25 MINS TO AIRPORT

Located 11 Kms away from Coimbatore Airport

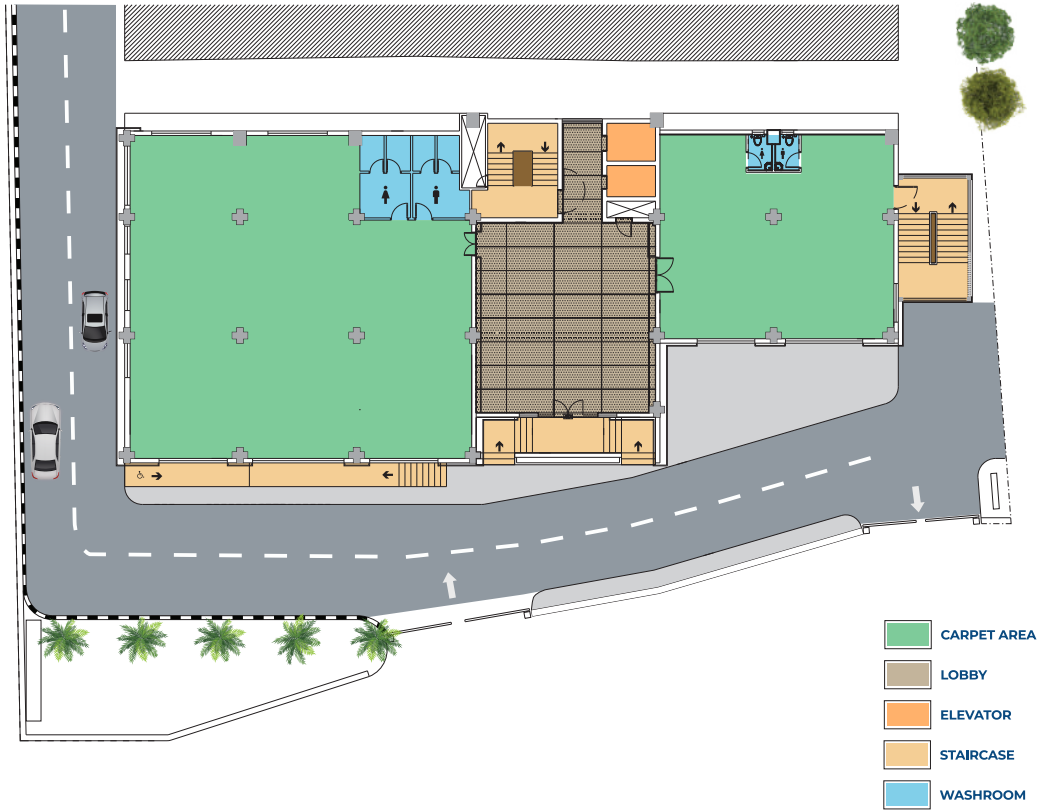


EXCELLENT CONNECTIVITY

Trichy Road has excellent connectivity to the rest of city. With an office at Cheran Plaza you will be able to attract talents from across the city

For sample fit-outs for your business, please contact our sales representative.

FLOOR PLAN - GROUND FLOOR



FLOOR PLAN - FIRST FLOOR



FLOOR PLAN - SECOND FLOOR



TYPICAL FLOOR PLAN (3RD - 9TH FLOOR)



TERRACE



CHERAN PLAZA

Every level enjoys excellent daylight, great outdoors for a peaceful and productive working environment.

The drop-zone assures smooth traffic flow, while the multi-level car parking can accommodate upto 60 cars.

Find the right fit for your business from a range of possible sizes.



- CARPET AREA
- LOBBY
- ELEVATOR
- STAIRCASE
- WASHROOM



CHERAN PLAZA



Site and Sales Office: Cheran Plaza, 1090, Trichy Road, Coimbatore - 641018. Tamil Nadu,
T: +91 93840 26371 | **M:** sales@cheranglobal.com | **W:** www.cheranplaza.com